



APMS International Co. Ltd.

No. 141, Yubao Rd., Xitun Dist., Taichung City 407, Taiwan (R.O.C.)

TEL: 886-4-23580132

FAX: 886-4-23595462

Website: www.pedotecdesign.com

E-mail: apms@apms.tw
info@pedotecdesign.com

Specifications subject to change without notice.

PEDOTEC is a trademark of APMS International Co. Ltd.

Copyright © APMS International Co. Ltd.

All other trademarks are the property of their respective owners.



apms@apms.tw

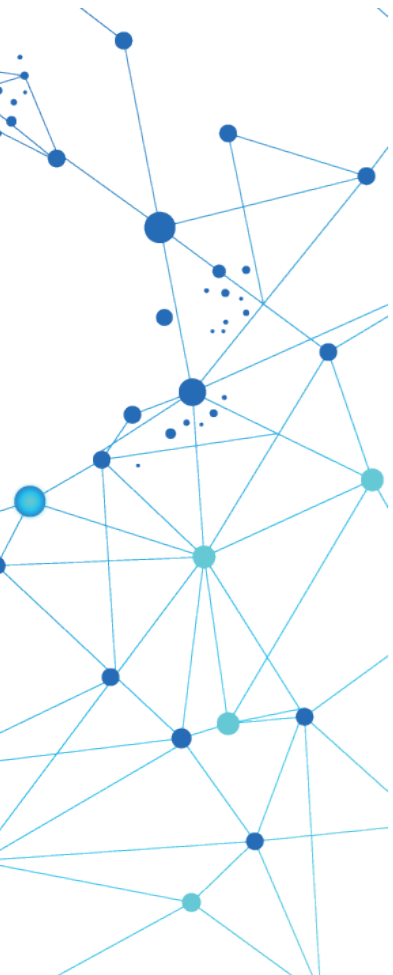
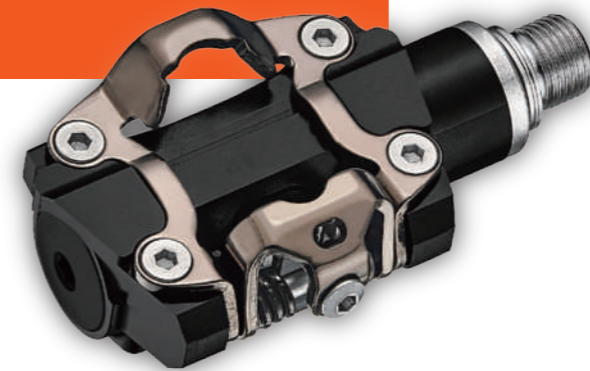
info@pedotecdesign.com



www.pedotecdesign.com

PEDOTEC

2024 COLLECTION



WELCOME TO



PEDOTECH is a trademark of APMS International Co. Ltd.
 Copyright © APMS International Co. Ltd.
 All other trademarks are the property of their respective owners.



Pedal products

Professional Pedal Products Series
 POWER METER, ROAD, MTB, BMX,
 CITY



Company

Since 2012.1.1 APMS INTERNATIONAL CO., LTD.
 APMS has a large and highly skilled R & D team made pedals
 products experienced leader.



Accessories

Accessories, Cleats, Chain Guide,
 Dropper post



Introduction

The Measure of Factory 3967 Sq.ft
 Capacity of pedal per month 35,000prs

INDEX

PEDOTECH

INTRODUCTION
 INDEX

FORMULA

03 POWER METER
 05 CADENCE

PEDALS

07 ROAD
 09 MTB
 13 BMX
 18 CITY, INDOOR

ACCESSORIES

19 DRORRER POST
 21 CHAINRINGS
 22 CLEATS
 23 CHAIN GUIDE
 24 BOTTLE CAGES,
 WATER BOTTLES
 25 HANDLE BAR,
 GRIP PIN

ABOUT PEDOTECH

Your promise to your customers is they will enjoy the most awesome Power Meter Pedals available on the market today.

We enable you to deliver on that promise by delivering to you the safest and most durable (and high-tech) power meter pedals around.

How do we do this?

Through continual testing and modification, more testing and more modification.
 For example, the standard prescribes 1,000,000 revolutions — We test to 3,000,000.
 That adds up to 30 hours continual stress on the axle and bearing.

Drawing on our extensive OEM and ODM experience we have created the Formula range of power meter pedals.

We developed these cutting edge power meter pedals in partnership with SCADA and one of Taiwan's biggest personal electronics companies Direction Technology.

Best Practice OEM/ODM

We still do OEM and ODM projects and have worked on Cycore products, to name a few.

If you have developed a fully fledged product of your own, we'll make it happen.

If you need high-tech engineering design input, we'll realize exactly the product you have in mind.

Extruded machined pedal and CNC-machined pedals are also our forte if that is what you need.

▶ contact us

 www.pedotecdesign.com

 info@pedotecdesign.com
apms@apms.tw

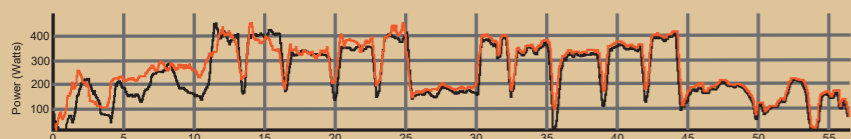
APMS International Co. Ltd.

No. 141, Yubao Rd., Xitun Dist., Taichung City
 407022, Taiwan
 TEL: 886-4-23580132
 FAX: 886-4-23595462



Compatible	
Ride for life	Garmin
Zwift	Bryton
Strava	Wahoo
Connectivity	
Bluetooth Smart	
ANT+	

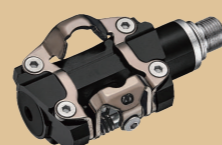
FUNCTION Measure both Power and Cadence	BATTERY CR2032, 3V 80~120 hours	CONNECTIVITY ANT+ / BLE	WATER RESISTANT LEVEL IPX6



PEDOTEC S brand (Q)



FORMULA PA1 (DOUBLE-SIDE)
FORMULA PA2 (SINGLE-SIDE)



FORMULA PS1 (DOUBLE-SIDE)
FORMULA PS2 (SINGLE-SIDE)

POWER METER GPS COMPUTER



- GPS enable
- App Navigation
- Designed for Smart Trainer & Power Meter pedal
- BLE 4.2 compatible with Bluetooth Heart Rate
- Cadence
- Power Meter SENSOR

CYCORE G300P

- Power (current/average/maximum)
- Power (left/right)
- FTP

Keo System



FORMULA PA1 (DOUBLE-SIDE)

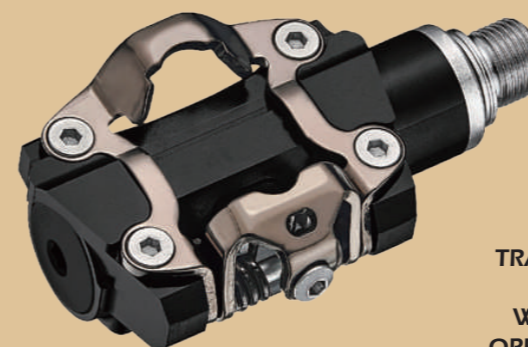
- BODY: 6061 aluminum, forged body
- AXLE: CNC-machined Cr-Mo
- BEARING: Fiber-glass binding, LSL bushing & Sealed
- BINDING: Fiber-glass reinforced thermoplastic, tension adjustable
- COMPATIBILITY: Compatible with Look Keo system
- SIZE: 83 x 94 mm
- BATTERY: CR2023,3V
- TRANSMISSION PROTOCOL: ANT+ and Bluetooth Smart
- FUNCTION: Measure both power and cadence
- WATER RESISTANT LEVEL: IPX6
- OPERATION TEMPERATURE: -20~50°C
- WEIGHT: 214 g/pc(including battery)



FORMULA PA2 (SINGLE-SIDE)



FORMULA PS1 (DOUBLE-SIDE)



- BODY: 6061 aluminum, CNC-machined body
- AXLE: CNC-machined Cr-Mo
- BEARING: LSL bushing & Sealed
- BINDING: Single-sided Cr-Mo binding, tension adjustable
- COMPATIBILITY: Compatible with SPD system
- SIZE: 54 x 98 mm
- BATTERY: CR2023,3V
- TRANSMISSION PROTOCOL: ANT+ and Bluetooth Smart
- FUNCTION: Measure both power and cadence
- WATER RESISTANT LEVEL: IPX6
- OPERATION TEMPERATURE: -20~50°C
- WEIGHT: 218 g/pc(including battery)

FORMULA PS2 (SINGLE-SIDE)



CADENCE X e-PEDAL



BATTERY: LR44
TRANSMISSION PROTOCOL: ANT+ and BLE
FUNCTION: Measure Cadence
WATER RESISTANT LEVEL: IPX6
OPERATION TEMPERATURE: -20° - 50°C



	FUNCTION Measure Cadence		BATTERY LR44 400 hours
	CONNECTIVITY ANT+ / BLE		WATER RESISTANT LEVEL IPX6
	COMPATIBLE APPS 		LIGHT-CURRENT SYSTEM

KEO SYSTEM

FORMULA RP-P1



BODY: Injection engineering thermoplastic
AXLE: CNC-machined Cr-Mo
BEARING: LSL bushing & sealed
BINDING: Fiber-glass reinforced thermoplastic, tension adjustable
COMPATIBILITY: Compatible with Look-Keo system
SIZE: 83 X 94 mm
WEIGHT: 180g/pc

FORMULA RP-M3



BODY: Die-Cast Aluminum
AXLE: CNC-machined Cr-Mo
BEARING: LSL bushing & sealed
BINDING: Single-sided Cr-Mo, tension adjustable
OPTION: Replaceable grip pins
OTHER: Reflectors included
COMPATIBILITY: Compatible with SPD system
SIZE: 106 X 98 mm
WEIGHT: 282g/pc



FORMULA RP-M2CS

BODY: 6061 aluminum, CNC-machined
AXLE: CNC-machined Cr-Mo
BEARING: LSL bushing & sealed
BINDING: Dual-sided Cr-Mo, tension adjustable
COMPATIBILITY: Compatible with SPD system
SIZE: 107 X 111 mm
WEIGHT: 294g/pc
COLOR: ● BK ● RD



FORMULA RP-M2C

BODY: 6061 aluminum, CNC-machined
AXLE: CNC-machined Cr-Mo
BEARING: LSL bushing & sealed
OTHER: Replaceable grip pins
SIZE: 113 X 105 mm
WEIGHT: 220g/pc
COLOR: ● BK ● RD



FORMULA RP-M1

BODY: Die-Cast Aluminum
AXLE: CNC-machined Cr-Mo
BEARING: LSL bushing & sealed
OTHER: Reflectors included, Replaceable grip pins
SIZE: 111 X 108 mm
WEIGHT: 240g/pc
COLOR: ● BK ● RD



Compatible with KEO SYSTEM

PT-ARROW158

BODY: 6061 aluminum, CNC-machined
AXLE: CNC-machined Cr-Mo
BEARING: LSL bushing & sealed
BINDING: Fiber-glass reinforced thermoplastic, tension adjustable
CLEAT: PT-KCR72/ PT-KCB02
SIZE: 85 X 90 mm
WEIGHT: 157g/pc



Compatible with KEO SYSTEM

PT-ARROW119

BODY: Injection engineering thermoplastic body with stainless abrasion guard
AXLE: CNC-machined Cr-Mo
BEARING: LSL bushing & sealed
BINDING: Fiber-glass reinforced thermoplastic, tension adjustable
CLEAT: PT-KCR72/ PT-KCB02
SIZE: 83 X 94 mm
WEIGHT: 125g/pc



Compatible with KEO SYSTEM

PT-ARROW166

BODY: Die-cast aluminum
AXLE: CNC-machined Cr-Mo
BEARING: LSL bushing & sealed
BINDING: Fiber-glass reinforced thermoplastic, tension adjustable
CLEAT: PT-KCR72/ PT-KCB02
SIZE: 86 X 86 mm
WEIGHT: 164g/pc



Compatible with SHIMANO SYSTEM

PT-ARROW163

BODY: 6061 aluminum, CNC-machined
AXLE: CNC-machined Cr-Mo
BEARING: LSL bushing & sealed
BINDING: Fiber-glass reinforced thermoplastic, tension adjustable
CLEAT: PT-SLR62/ PT-SLB02
SIZE: 87 X 90 mm
WEIGHT: 163g/pc



Compatible with SHIMANO SYSTEM

PT-ARROW148

BODY: Injection engineering thermoplastic
AXLE: CNC-machined Cr-Mo
BEARING: LSL bushing & sealed
BINDING: Fiber-glass reinforced thermoplastic, tension adjustable
CLEAT: PT-SLR62/ PT-SLB02
SIZE: 82 X 93 mm
WEIGHT: 148g/pc



Compatible with SHIMANO SYSTEM

PT-ARROW165

BODY: Die-cast aluminum
AXLE: CNC-machined Cr-Mo(cartridge)
BEARING: LSL bushing & sealed
BINDING: Fiber-glass reinforced thermoplastic, tension adjustable
CLEAT: PT-SLR62/ PT-SLB02
SIZE: 88 X 93 mm
WEIGHT: 165g/pc



DOUBLE-SIDE

PT-AEGIS169

BODY: 6061 aluminum, CNC-machined
AXLE: CNC-machined Cr-Mo
BEARING: LSL bushing & sealed
BINDING: Dual-sided Cr-Mo, tension adjustable
CLEAT: PT-S01
SIZE: 80 X 60 mm
WEIGHT: 165g/pc



DOUBLE-SIDE

PT-AEGIS178

BODY: Die-cast aluminum
AXLE: CNC-machined Cr-Mo
BEARING: LSL bushing & sealed
BINDING: Dual-sided Cr-Mo, tension adjustable
CLEAT: PT-S01
SIZE: 80 X 60 mm
WEIGHT: 178g/pc



Ball Bearings **PT-AEGIS178B** Ball bearings version

DOUBLE-SIDE

PT-AEGIS197

BODY: 6061 aluminum, CNC-machined
AXLE: CNC-machined Cr-Mo
BEARING: LSL bushing & sealed
BINDING: Dual-sided Cr-Mo, tension adjustable
CLEAT: PT-S01
SIZE: 87 X 90 mm
WEIGHT: 196g/pc



DOUBLE-SIDE

PT-AEGIS213

BODY: 6061 aluminum, CNC-machined
AXLE: CNC-machined Cr-Mo
BEARING: LSL bushing & sealed
BINDING: Dual-sided Cr-Mo, tension adjustable
CLEAT: PT-S01
SIZE: 103 X 96 mm
WEIGHT: 212g/pc



DOUBLE-SIDE

PT-AEGIS279

BODY: 6061 aluminum, CNC-machined
AXLE: CNC-machined Cr-Mo
BEARING: LSL bushing & sealed
BINDING: Dual-sided Cr-Mo, tension adjustable
CLEAT: PT-S01
SIZE: 107 X 111 mm
WEIGHT: 279g/pc
COLOR: ● BK ● RD



DOUBLE-SIDE

PT-AEGIS244

BODY: Die-cast aluminum body with engineering thermoplastic platform
AXLE: CNC-machined Cr-Mo
BEARING: LSL bushing & sealed
BINDING: Dual-sided Cr-Mo, spring-loaded, tension adjustable
CLEAT: PT-S01
SIZE: 105 X 103 mm
WEIGHT: 244g/pc



POP-UP Binding



DOUBLE-SIDE

PT-AEGIS284

- BODY:** Die-cast aluminum body with CNC aluminum platform
- AXLE:** CNC-machined Cr-Mo
- BEARING:** LSL bushing & sealed
- BINDING:** Dual-sided Cr-Mo, spring-loaded, tension adjustable
- CLEAT:** PT-S01
- SIZE:** 105 X 103 mm
- WEIGHT:** 284g/pc



POP-UP Binding

SINGLE-SIDE

PT-AEGIS175

- BODY:** Injection engineering thermoplastic
- AXLE:** CNC-machined Cr-Mo
- BEARING:** LSL bushing & sealed
- BINDING:** Single-sided Cr-Mo, tension adjustable
- CLEAT:** PT-S01
- SIZE:** 94 X 100 mm
- WEIGHT:** 175g/pc



REAR

SINGLE-SIDE

PT-AEGIS156

- BODY:** 6061 aluminum, CNC-machined
- AXLE:** CNC-machined Cr-Mo
- BEARING:** LSL bushing & sealed
- BINDING:** Single-sided Cr-Mo, tension adjustable
- CLEAT:** PT-S01
- SIZE:** 84 X 86 mm
- WEIGHT:** 157g/pc



REAR

SINGLE-SIDE

PT-AEGIS275

- BODY:** Die-cast aluminum
- AXLE:** CNC-machined Cr-Mo
- BEARING:** LSL bushing & sealed
- BINDING:** Single-sided Cr-Mo, tension adjustable
- OPTION:** Replaceable grip pins
- OTHER:** Reflectors included
- CLEAT:** PT-S01
- SIZE:** 106 X 98 mm
- WEIGHT:** 267g/pc

Ball Bearings **PT-AEGIS275B** Ball bearings version



REAR



SINGLE-SIDE

PT-AEGIS241

- BODY:** 6061 aluminum, CNC-machined
- AXLE:** CNC-machined Cr-Mo
- BEARING:** LSL bushing & sealed
- BINDING:** Single-sided Cr-Mo, tension adjustable
- CLEAT:** PT-S01
- SIZE:** 107 X 111 mm
- WEIGHT:** 241g/pc
- COLOR:** ● BK ● RD



REAR



SINGLE-SIDE

PT-AEGIS153

- BODY:** Injection engineering thermoplastic
- AXLE:** CNC-machined Cr-Mo(cartridge)
- BEARING:** LSL bushing & sealed
- BINDING:** Single-sided Cr-Mo, tension adjustable
- CLEAT:** PT-S01
- SIZE:** 95 X 90 mm
- WEIGHT:** 153g/pc



REAR



PT-THUNDER117

BODY: Die-cast Magnesium
AXLE: CNC-machined Cr-Mo
BEARING: LSL bushing & sealed
OTHER: Replaceable grip pins
SIZE: 112 X 110 mm
WEIGHT: 177g/pc
COLOR: ● BK ● RD



PT-THUNDER189

BODY: 6061 aluminum, CNC-machined
AXLE: CNC-machined Cr-Mo
BEARING: LSL bushing & sealed
OTHER: Replaceable grip pins
SIZE: 110 X 108 mm
WEIGHT: 189g/pc
COLOR: ● BK ● RD



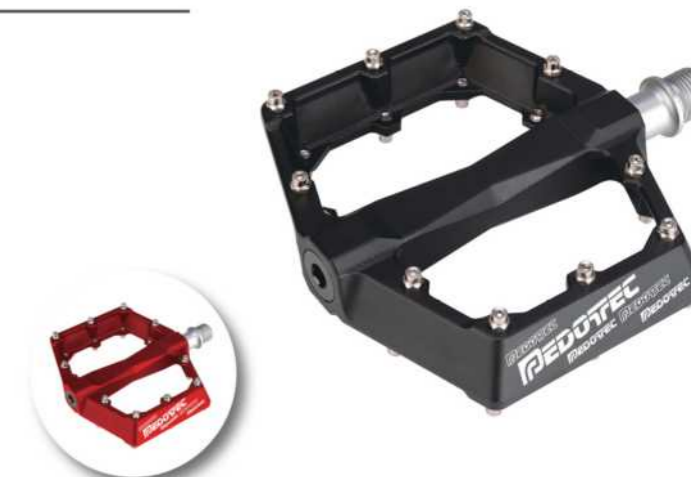
PT-THUNDER205

BODY: 6061 aluminum, CNC-machined
AXLE: CNC-machined Cr-Mo
BEARING: LSL bushing & sealed
OTHER: Replaceable grip pins
SIZE: 113 X 105 mm
WEIGHT: 205g/pc
COLOR: ● BK ● RD ● PK



PT-THUNDER220

BODY: Die-cast aluminum
AXLE: CNC-machined Cr-Mo
BEARING: LSL bushing & sealed
OTHER: Replaceable grip pins
SIZE: 115 X 108 mm
WEIGHT: 230g/pc
COLOR: ● BK ● RD



PT-THUNDER182

BODY: 6061 aluminum, CNC-machined
AXLE: CNC-machined Cr-Mo
BEARING: LSL bushing & sealed
OTHER: Replaceable grip pins
SIZE: 110 X 108 mm
WEIGHT: 180g/pc
COLOR: ● BK ● RD



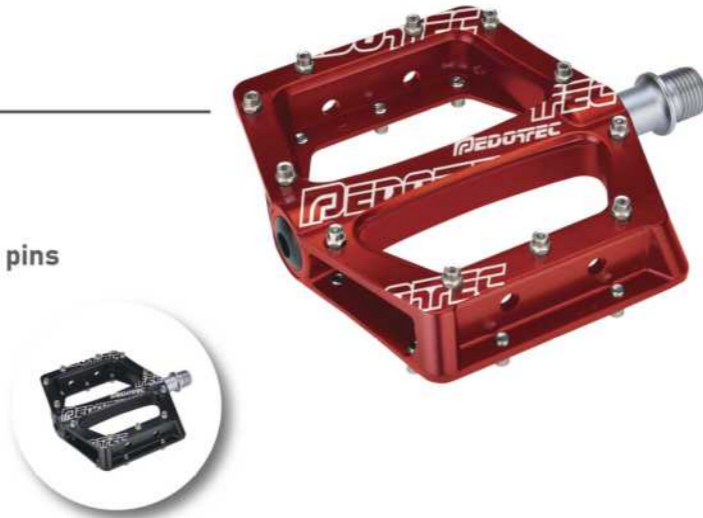
PT-THUNDER171

BODY: 6061 aluminum, CNC-machined
AXLE: CNC-machined Cr-Mo
BEARING: LSL bushing & sealed
OTHER: Replaceable grip pins
SIZE: 102 X 108 mm
WEIGHT: 170g/pc
COLOR: ● BK ● RD



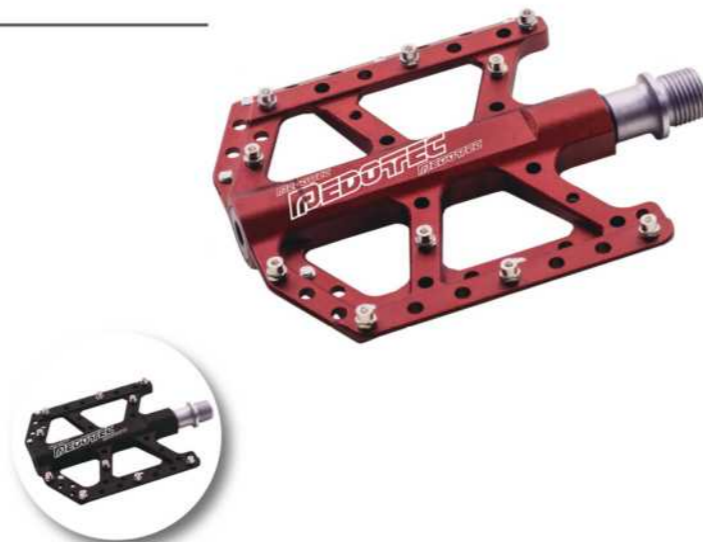
PT-THUNDER225

BODY: Die-cast aluminum
AXLE: CNC-machined Cr-Mo
BEARING: LSL bushing & sealed
OTHER: Reflectors included, Replaceable grip pins
SIZE: 111 X 108 mm
WEIGHT: 225g/pc
COLOR: ● BK ● RD



PT-THUNDER195

BODY: 6061 aluminum, CNC-machined
AXLE: CNC-machined Cr-Mo
BEARING: LSL bushing & sealed
OTHER: Replaceable grip pins
SIZE: 100 X 105 mm
WEIGHT: 195g/pc
COLOR: ● BK ● RD



PT-THUNDER148

BODY: 6061 aluminum, CNC-machined
AXLE: CNC-machined Cr-Mo
BEARING: LSL bushing & sealed
OTHER: Replaceable grip pins
SIZE: 100 X 105 mm
WEIGHT: 148g/pc
COLOR: ● BK ● RD



NEW

PT-THUNDER172

BODY: Engineering thermoplastic
AXLE: CNC-machined Cr-Mo
BEARING: Oversize bearing, Needle bearing, Sealed bearing
OTHER: Replaceable grip pins
SIZE: 117 X 114 mm
WEIGHT: 171g/pc
COLOR: ● BK ● RD ● OG ● LM ● GR ● BL



NEW

PT-THUNDER184D

BODY: Engineering thermoplastic
AXLE: CNC-machined Cr-Mo
BEARING: 2 Flange bearings
OTHER: Replaceable grip pins
SIZE: 113 X 114 mm
WEIGHT: 183g/pc
COLOR: ● BK ● RD ● OG ● LM ● GR ● BL



PT-THUNDER183

BODY: Engineering thermoplastic
AXLE: CNC-machined Cr-Mo
BEARING: LSL bushing & sealed
OTHER: Replaceable grip pins
SIZE: 113 X 105 mm
WEIGHT: 175g/pc
COLOR: ● BK ● RD ● OG ● LM ● GR ● BL



PT-THUNDER180

BODY: Engineering thermoplastic
AXLE: CNC-machined Cr-Mo
BEARING: LSL bushing & sealed
OTHER: Replaceable grip pins
SIZE: 113 X 114 mm
WEIGHT: 180g/pc
COLOR: ● BK ● RD ● OG ● LM ● GR ● BL



NEW

PT-CE188

BODY: Engineering thermoplastic body with sand-paper
AXLE: CNC-machined Cr-Mo
BEARING: LSL bushing, sealed
OTHER: Reflectors included
SIZE: 108 X 86 mm
WEIGHT: 188g/pc
COLOR: ● BK ● RD ● OG ● LM ● BL



★ 2DU PT-CED188



NEW

PT-CF218

BODY: Die-cast Aluminum with sand-paper
AXLE: CNC-machined Cr-Mo
BEARING: LSL bushing, sealed
OTHER: Reflectors included
SIZE: 110 X 88 mm
WEIGHT: 218g/pc



★ 2DU PT-CFD218

PT-CF158

BODY: 6061 aluminum, CNC-machined body with sand-paper
AXLE: CNC-machined Cr-Mo
BEARING: LSL bushing & sealed
SIZE: 98 X 78 mm
WEIGHT: 158g/pc
COLOR: ● BK ● SL



PT-ARROW246 Indoor pedal

INTERFACE: (Compatible with Look Delta)
BODY: Aluminum, nickel plated & ED black, corrosion resistant
AXLE: Heat-treated, Oversize CNC-machined Cr-Mo
BEARING: Oversize sealed & needle
BINDING: Fiberglass-reinforced thermoplastic, tension adjustable with gauge
SIZE: 87 X 90 mm
WEIGHT: 250g/pc



PT-MD302

BODY: One piece, Die-cast aluminum
AXLE: CNC-machined Cr-Mo
BEARING: LSL bushing & sealed
OTHER: Reflectors included
SIZE: 99 X 67 mm
WEIGHT: 143g/pc



DROPPER POST *MARS series*



RLV01
ALLOY



RLH01
NYLON



RLH02
ALLOY

MODEL	MARS DP0125	MARS DP0150	MARS DP0170
Ø OD	30.9mm	30.9mm	30.9mm
TRAVEL	125mm	150mm	170mm
LENGTH	396mm	458mm	492mm
CARTRIDGE	air/oil cartridge	air/oil cartridge	air/oil cartridge
MIN.INSERT	100mm	100mm	100mm
WEIGHT	565g	665g	693g

MODEL	MARS DP1125	MARS DP1150	MARS DP1170
Ø OD	31.6mm	31.6mm	31.6mm
TRAVEL	125mm	150mm	170mm
LENGTH	396mm	458mm	492mm
CARTRIDGE	air/oil cartridge	air/oil cartridge	air/oil cartridge
MIN.INSERT	100mm	100mm	100mm
WEIGHT	580g	680g	708g

MODEL	MARS DP4125	MARS DP4150	MARS DP4170
Ø OD	34.9mm	34.9mm	34.9mm
TRAVEL	125mm	150mm	170mm
LENGTH	396mm	458mm	492mm
CARTRIDGE	air/oil cartridge	air/oil cartridge	air/oil cartridge
MIN.INSERT	100mm	100mm	100mm
WEIGHT	680g	778g	824g

HK series DROPPER POST

NEW



RLV01
ALLOY



RLH01
NYLON



ROTABLE



RLH02
ALLOY

MODEL	HK- 272100
Ø OD	27.2mm
TRAVEL	100mm
LENGTH	367mm
CARTRIDGE	air/oil cartridge
MIN.INSERT	100mm
WEIGHT	472g

MODEL	HK- 309125	HK-309155	HK-309185	HK-309215
Ø OD	30.9mm	30.9mm	30.9mm	30.9mm
TRAVEL	125mm	155mm	185mm	215mm
LENGTH	386mm	446mm	506mm	566mm
CARTRIDGE	air/oil cartridge	air/oil cartridge	air/oil cartridge	air/oil cartridge
MIN.INSERT	90mm	100mm	130mm	150mm
WEIGHT	465g	526g	580g	623g

MODEL	HK- 316125	HK-316155	HK-316185	HK-316215
Ø OD	31.6mm	31.6mm	31.6mm	31.6mm
TRAVEL	125mm	155mm	185mm	215mm
LENGTH	386mm	446mm	506mm	566mm
CARTRIDGE	air/oil cartridge	air/oil cartridge	air/oil cartridge	air/oil cartridge
MIN.INSERT	90mm	100mm	130mm	150mm
WEIGHT	486g	545g	597g	647g

MODEL	HK- 349125	HK-349155	HK-349185	HK-349215
Ø OD	34.9mm	34.9mm	34.9mm	34.9mm
TRAVEL	125mm	155mm	185mm	215mm
LENGTH	386mm	446mm	506mm	566mm
CARTRIDGE	air/oil cartridge	air/oil cartridge	air/oil cartridge	air/oil cartridge
MIN.INSERT	90mm	100mm	130mm	150mm
WEIGHT	519g	572g	625g	682g

CHAINRINGS



PT-CRE103

**FIT ANY 104 BCD CRANK
AL 7075 FULL CNC**
BCD: 104mm
TEETH: 38/24,36/22T
WEIGHT: 45g(34T)
COMPATIBILITY: 9/10/11 speed



PT-CRE105

**DIRECT MOUNT
AL 7075 FULL CNC**
TEETH: 26/28/30/32/34/36/38/40T
WEIGHT: 75g(32T)
COMPATIBILITY: 9/10/11 speed

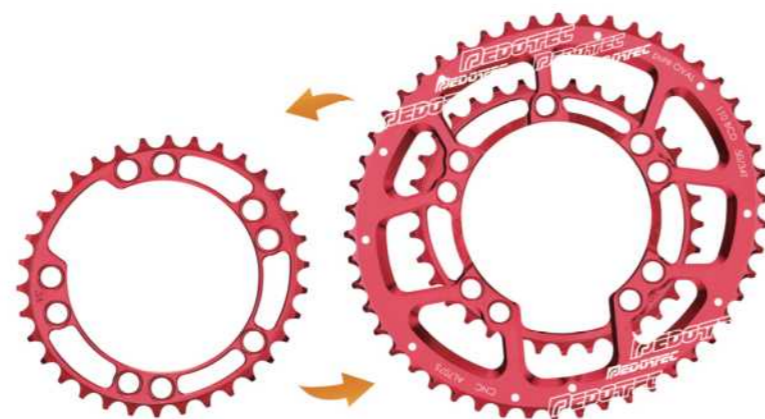


PT-CRE106

**FIX XT M8000
AL 7075 FULL CNC**
BCD: 96mm
TEETH: 34/36/38T
WEIGHT: 49g(34T)
COMPATIBILITY: 9/10/11 speed

PT-CRE209

**FOR BOTH 4-ARM & 5-ARM SPIDER
AL 7075 FULL CNC**
BCD: 110mm
TEETH: 53/39T, 52/36T, 50/34T
WEIGHT: 153g/pc



PT-CRE303

AL 7075 FULL CNC
BCD: 104/64mm
TEETH: 42/33/24T
WEIGHT: 148g/pc



CLEAT

NEW

KEO SYSTEM



PT-KCR71

MODE: Floating(7°)
MATERIAL: Engineering thermoplastic
COMPATIBILITY: Look keo system
WEIGHT: 24g/pc



PT-KCR72

MODE: Floating(7°)
MATERIAL: Engineering thermoplastic / TPU plastic
COMPATIBILITY: Look keo system
WEIGHT: 23g/pc



PT-KCB01

MODE: Fixed
MATERIAL: Engineering thermoplastic
COMPATIBILITY: Look keo system
WEIGHT: 24g/pc



PT-KCB02

MODE: Fixed
MATERIAL: Engineering thermoplastic / TPU plastic
COMPATIBILITY: Look keo system
WEIGHT: 23g/pc

NEW

ROAD SYSTEM



PT-SLR61

MODE: Floating(6°)
MATERIAL: Engineering thermoplastic
COMPATIBILITY: SPD-SL
WEIGHT: 25g/pc



PT-SLR62

MODE: Floating(6°)
MATERIAL: Engineering thermoplastic / TPU plastic
COMPATIBILITY: SPD-SL
WEIGHT: 25g/pc



PT-SLB01

MODE: Fixed
MATERIAL: Engineering thermoplastic
COMPATIBILITY: SPD-SL
WEIGHT: 25g/pc



PT-SLB02

MODE: Fixed
MATERIAL: Engineering thermoplastic / TPU plastic
COMPATIBILITY: SPD-SL
WEIGHT: 25g/pc

MTB SYSTEM



PT-S01

COMPATIBILITY: SPD
WEIGHT: 20g/pc



PT-C03F

COMPATIBILITY: SPD
WEIGHT: 20g/pc

CLEAT COVERS

Eliminates cleat wear. Improves walking comfort
lightweight, durable and flexible



PT-CK3B

COMPATIBILITY: Look keo system
WEIGHT: 23g/pc
Compatible with Road Cleats
KCR71, KCR72, KCB01, KCB02



PT-CK6B

WEIGHT: 43g/pc
Compatible with Road Cleats
RSL11, BSL11, also SPD-SL system



PT-CK2B

WEIGHT: 7g/pc
Compatible with MTB Cleats
S01, C03F

PT-CCG01

BODY: 6061 aluminum, CNC-machined with hi-polished anodized
HINGE: Nylon 6, Hinge & universal hinge available
GUIDE: Tube TPU
COLOR: ● BK ● RD ● GD



Easy to install, no need to remove the chain



BIKE AND FREERIDE MILESTONE AWARD 2011

Voted by the readers of bike (europe's biggest mtb magazine) and freeride (the gravity branch of bike).

EUROBIKE AWARD 2010.

Design competition held annually by trade fair organizers in association with if design award.

MANUFACTURED BY SCADA

PT-CCG03

BODY: TPU
HINGE: TPU
GUIDE: Tube TPU



PT-CA01

PRODUCT: BOTTLE CAGE
MATERIAL: Carbon
WEIGHT: 20g/pc



PT-512LW-BK

PRODUCT: BOTTLE
BOTTLE MATERIAL: LDPE
CAP MATERIAL: Polypropylene
VOLUME: 800cc



CSB-537W

PRODUCT: BOTTLE
BOTTLE MATERIAL: LDPE
CAP MATERIAL: Polypropylene
VOLUME: 700cc



CSB-512LW

PRODUCT: BOTTLE
BOTTLE MATERIAL: LDPE
CAP MATERIAL: Polypropylene
VOLUME: 800cc



CSB-512MW

PRODUCT: BOTTLE
BOTTLE MATERIAL: LDPE
CAP MATERIAL: Polypropylene
VOLUME: 600cc



HANDLE BAR, GRIP PIN



ORANGE

WHITE

GRAY

MODEL	PT-HB710	PT-HB760	PT-HB787
MATERIAL	Carbon	Carbon	Carbon
SIZE	31.8 X 710mm	31.8 X 760mm	31.8 X 787mm
WEIGHT	195g/pc	225g/pc	260g/pc

MODEL	PT-HB800	PT-HB810
MATERIAL	Carbon	Carbon
SIZE	35 X 800mm	35 X 810mm
WEIGHT	225g/pc	255g/pc

STEEL GRIP PINS

GRIP PIN COLOR OPTION

Custom grip pin colors based on MOQ 150PRS

PT-ESS088-4
M4 X 4mm

Blue Green Pink Yellow Red

PT-ESS088-8
M4 X 8mm

Blue Green Pink Yellow Red

PT-ESS113
M4 X 4mm

Blue Green Pink Yellow Red Purple

ALUMINUM GRIP PINS

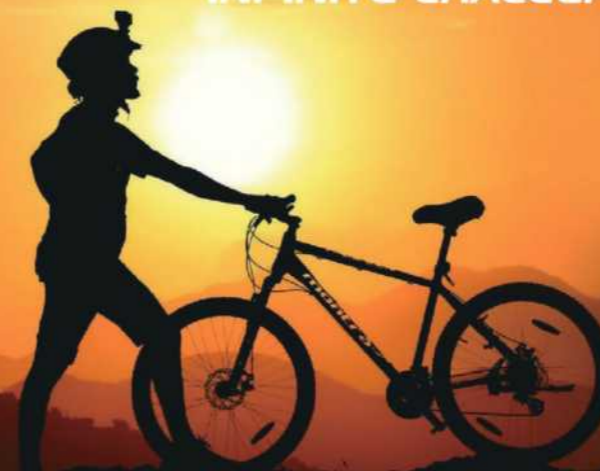
PT-ESS112-4
M4 X 4mm

Blue Green Pink Yellow Red

PT-ESS112-8
M4 X 8mm

Blue Green Pink Yellow Red

INFINITE CHALLENGE WITH **PEDOTECH**



Professional Pedal Product Series
ROAD, MTB, BMX, CITY



Design . Manufacturing . Quality

PEDOTECH